



JENDOCO REAL ESTATE

Parkway West Business Park

503 Parkway View Drive

2,940 Total Square Feet

1,896 Square Feet of Finished Office



MAIN FEATURES

- Clear Height: 16ft. Above finished floor to underside of structural steel
- Exterior: Insulated wall panel
- Glass wall system at offices

UTILITIES

- Electric: 120/208 volt, three phase four wire
- Natural Gas: Equitable
- Water & Sewage: Robinson Twp.

MISCELLANEOUS

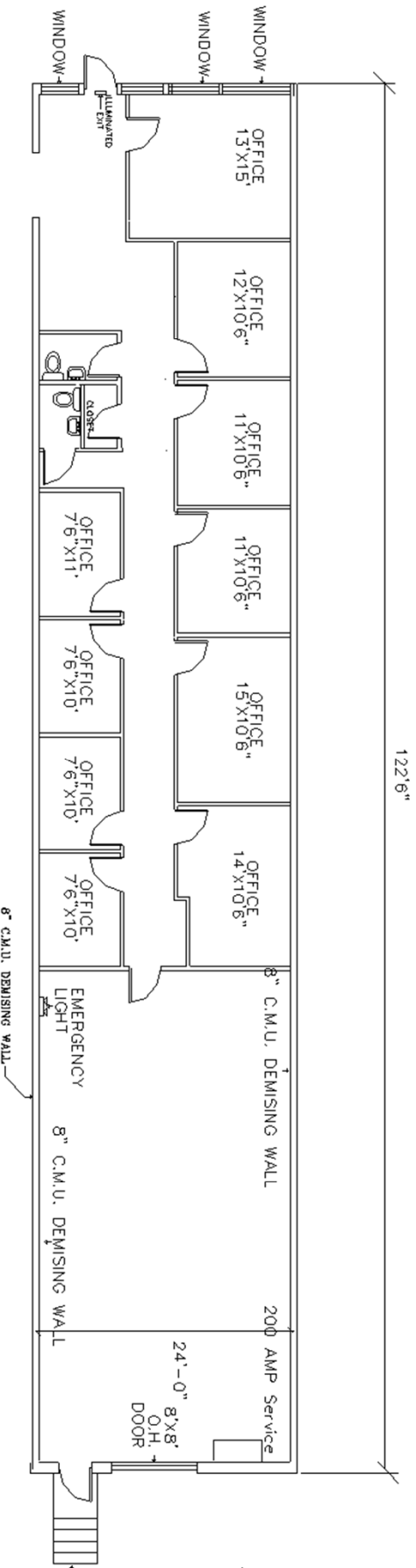
- Ample truck access and maneuvering
- 4 ft. high loading docks
- 24 hour, 7 day a week access

NAIOP
COMMERCIAL REAL ESTATE
DEVELOPMENT ASSOCIATION
PITTSBURGH CHAPTER



Contact Bob Lloyd - T 412-361-4509 F 412-361-4790 - Internet www.jendoco-re.com

All information furnished regarding properties for rent or sale are subject to errors, omissions, change of price or rental and change or withdraw without notice. Rental terms, all dimensions and specifications are approximate and subject to change without notice.



2,940 SQUARE FEET TOTAL
 1,896 SQUARE FEET OFFICE

JENDOCO REAL ESTATE

CAD Design Team

2000 Lincoln Road
 Pittsburgh, PA 15235

Phone: (412) 361 - 4509
 Fax: (412) 361 - 4790

PARKWAY WEST BUS. PARK

SCALE:	1/8"=10'	APPROVED BY:	TAB
DATE:	9/30/93	DRAWN BY:	SAMDOZ INC.
		REVISED	10/14/09

PW - 503

NORTH

