



JENDOCO REAL ESTATE

TRY OUR
NEW WEBVISION

jendoco-re.com

Parkway West Business Park 908A Parkway View Drive

5,943 Total Square Feet
1,393 Square Feet of Finished Office



MAIN FEATURES

- Clear Height: 16ft. Above finished floor to underside of structural steel
- Exterior: Insulated wall panel
- Glass wall system at offices

UTILITIES

- Electric: 120/208 volt, three phase four wire
- Natural Gas: Equitable
- Water & Sewage: Robinson Twp.

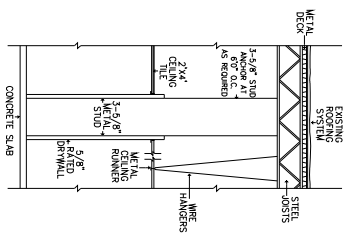
MISCELLANEOUS

- Ample truck access and maneuvering
- 4 ft. high loading docks
- 24 hour, 7 day a week access

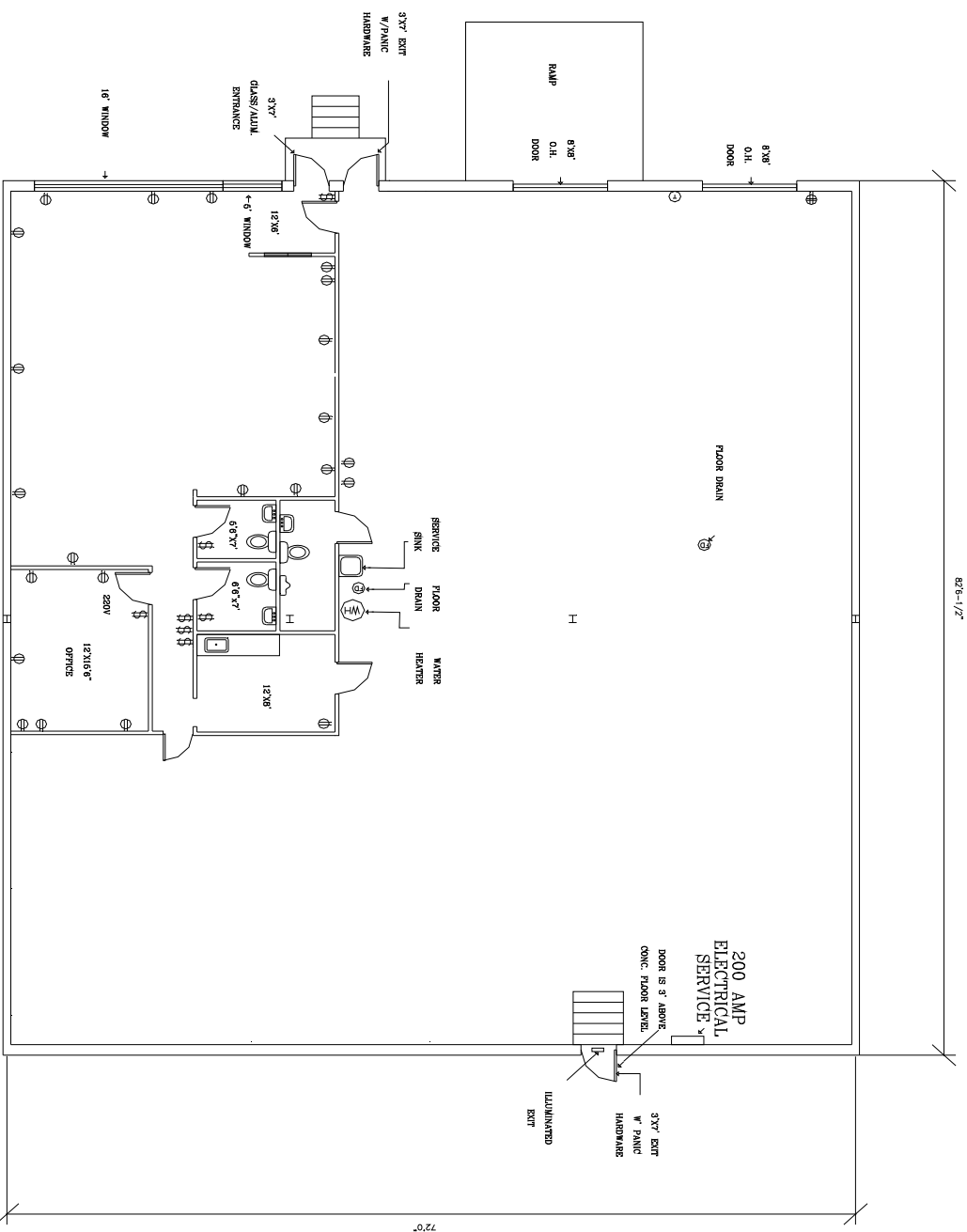


Contact Bob Lloyd - T 412-361-4509 F 412-361-4790 - Internet www.jendoco-re.com

All information furnished regarding properties for rent or sale are subject to errors, omissions, change of price or rental and change or withdraw without notice. Rental terms, all dimensions and specifications are approximate and subject to change without notice.

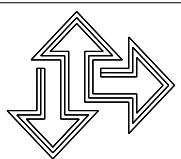


TYPICAL WALL SECTION



ALL INFORMATION ON THIS DRAWING MUST BE
 CONSIDERED AS PRELIMINARY AND NOT BE
 RELIED UPON FOR CONSTRUCTION. THE
 CONTRACTOR SHALL BE RESPONSIBLE FOR
 VERIFYING ALL INFORMATION UNLESS NOTED
 OTHERWISE.

6,848 SQUARE FEET TOTAL AREA
 1,383 SQUARE FEET FINISHED OFFICE



JENDOCO REAL ESTATE

CAD Design Team

2000 Lincoln Road
 Pittsburgh, PA 15235

Phone: (412) 361 - 4509
 Fax: (412) 361 - 4790

PARKWAY WEST BUS. PARK

SCALE:	3/16"=1'	DRAWN BY:	RVL
DATE:	7-28-93	APPROVED BY:	SAMDOZ INC.
		REVISION:	4/15/03

PW-908-A



NORTH