



JENDOCO REAL ESTATE

**TRY OUR
NEW WEBSITE**

jendoco-re.com

Parkway West Business Park
904 Parkway View Drive
1,981 Total Square Feet
580 Square Feet of Finished Office



MAIN FEATURES

- Clear Height: 16ft. Above finished floor to underside of structural steel
- Exterior: Insulated wall panel
- Glass wall system at offices

UTILITIES

- Electric: 120/208 volt, three phase four wire
- Natural Gas: Equitable
- Water & Sewage: Robinson Twp.

MISCELLANEOUS

- Ample truck access and maneuvering
- 4 ft. high loading docks
- 24 hour, 7 day a week access



Contact Bob Lloyd - T 412-361-4509 F 412-361-4790 - Internet www.jendoco-re.com

All information furnished regarding properties for rent or sale are subject to errors, omissions, change of price or rental and change or withdraw without notice. Rental terms, all dimensions and specifications are approximate and subject to change without notice.



2000 Lincoln Road
Pittsburgh, PA 15235

JENDOCO REAL ESTATE

CAD Design Team

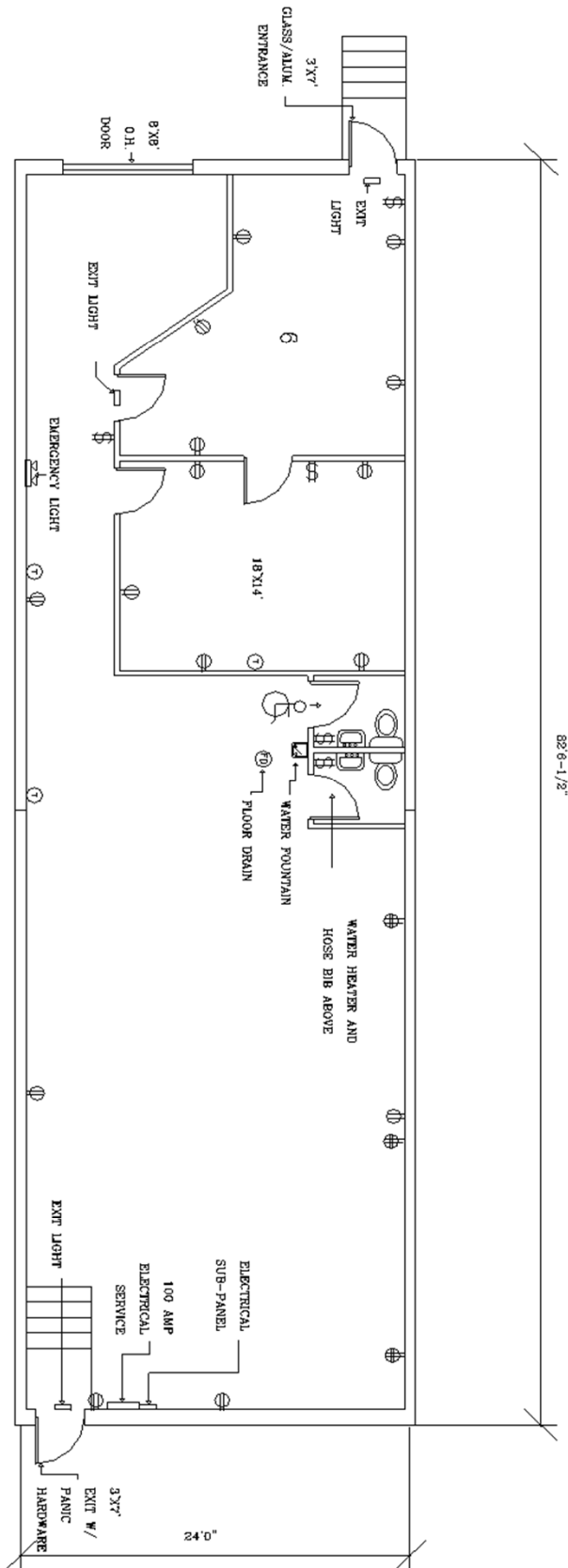
Phone: (412) 361 - 4509
Fax: (412) 361 - 4790

PARKWAY WEST BUSINESS PARK

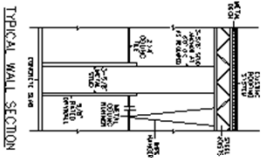
SCALE: 1/4"=10'
DATE: 5-18-93
APPROVED BY: PARKWEST ASSOC.
DRAWN BY: RVL
REVISED 5/2/95

PW-904

NORTH



1,981 SQUARE FEET TOTAL AREA
680 SQUARE FEET FINISHED OFFICE



ALL INFORMATION ON THIS DRAWING MUST BE
FIELD VERIFIED FOR ACCURACY. OWNER ASSUMES
NO LIABILITY FOR INFORMATION UTILIZED FROM
THIS DOCUMENT.

- KEY**
- HANDICAPPED ACCESSIBLE
 - SWITCH
 - DUPLEX OUTLET
 - THERMOSTAT