



# JENDOCO REAL ESTATE

TRY OUR  
NEW WEBSITE

[jendoco-re.com](http://jendoco-re.com)

## Parkway West Business Park 605 Parkway View Drive

**2,940 Total Square Feet**  
**1,200 Square Feet of Finished Office**



### MAIN FEATURES

- Clear Height: 16ft. Above finished floor to underside of structural steel
- Exterior: Insulated wall panel
- Glass wall system at offices

### UTILITIES

- Electric: 120/208 volt, three phase four wire
- Natural Gas: Equitable
- Water & Sewage: Robinson Twp.

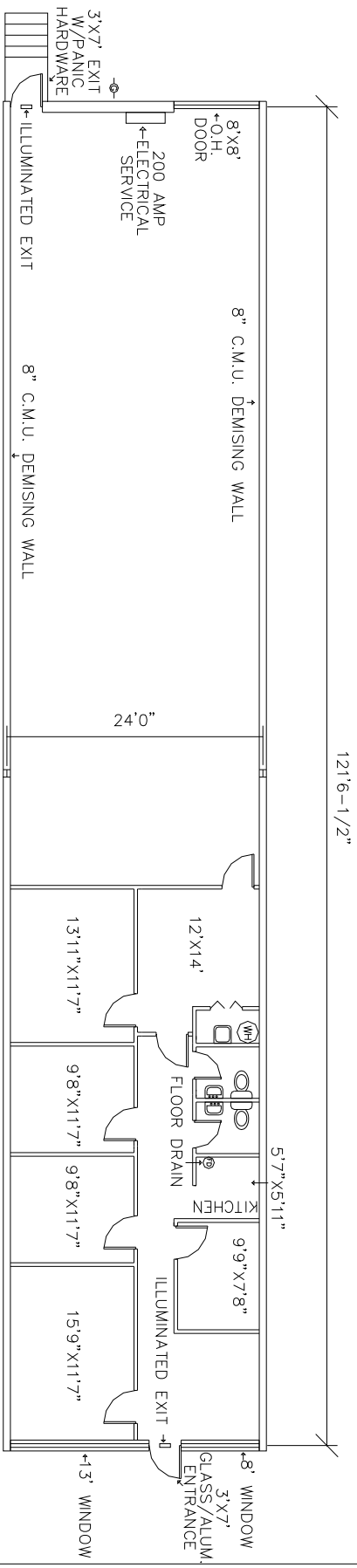
### MISCELLANEOUS

- Ample truck access and maneuvering
- 4 ft. high loading docks
- 24 hour, 7 day a week access

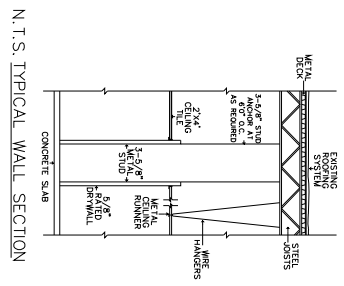


Contact Bob Lloyd - T 412-361-4509 F 412-361-4790 - Internet [www.jendoco-re.com](http://www.jendoco-re.com)

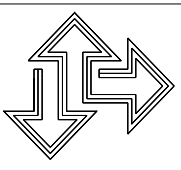
All information furnished regarding properties for rent or sale are subject to errors, omissions, change of price or rental and change or withdraw without notice. Rental terms, all dimensions and specifications are approximate and subject to change without notice.



2940 SQUARE FEET TOTAL AREA  
 1200 SQUARE FEET FINISHED AS OFFICE

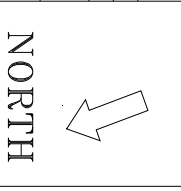


ALL INFORMATION ON THIS DRAWING MUST BE  
 FIELD VERIFIED FOR ACCURACY. OWNER ASSUMES  
 NO LIABILITY FOR INFORMATION UTILIZED FROM  
 THIS DOCUMENT.



**JENDOCO REAL ESTATE**  
*CAD Design Team*  
 2000 Lincoln Road  
 Pittsburgh, PA 15235  
 Phone: (412) 361 - 4509  
 Fax: (412) 361 - 4790

<b>PARKWAY WEST BUSINESS PARK</b>	
SCALE: 1/8"=1'	APPROVED BY: SAMDOZ INC.
DATE: 3/25/94	REVISED: 3/10/10
PW-605	



**NORTH**