

JENDOCO REAL ESTATE

**TRY OUR
NEW WEBVISION**

jendoco-re.com

Parkway West Business Park

1201 Parkway View Drive

6,000 Total Square Feet

1,279 Square Feet of Finished Office



MAIN FEATURES

- Clear Height: 16ft. Above finished floor to underside of structural steel
- Exterior: Insulated wall panel
- Glass wall system at offices

UTILITIES

- Electric: 120/208 volt, three phase four wire
- Natural Gas: Equitable
- Water & Sewage: Robinson Twp.

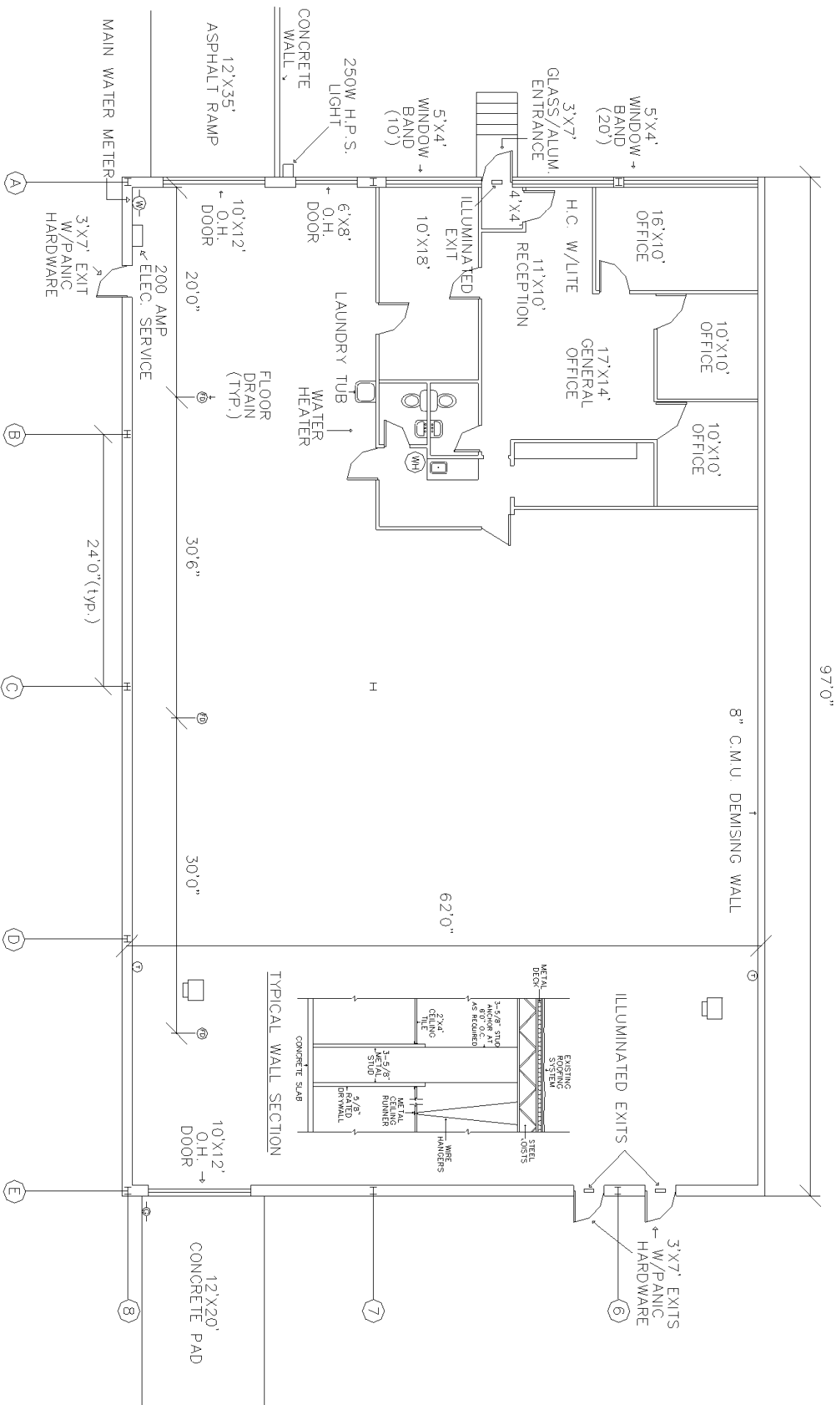
MISCELLANEOUS

- Ample truck access and maneuvering
- 4 ft. high loading docks
- 24 hour, 7 day a week access



Contact Bob Lloyd - **T** 412-361-4509 **F** 412-361-4790 - **Internet** www.jendoco-re.com

All information furnished regarding properties for rent or sale are subject to errors, omissions, change of price or rental and change or withdraw without notice. Rental terms, all dimensions and specifications are approximate and subject to change without notice.



ALL INFORMATION ON THIS DRAWING MUST BE FIELD VERIFIED FOR ACCURACY. OWNER ASSUMES NO LIABILITY FOR INFORMATION UTILIZED FROM THIS DOCUMENT.

6000 SQUARE FEET TOTAL AREA
1279 SQUARE FEET FINISHED AS OFFICE

PITTSBURGH BUSINESS PARKS

CAD Design Team

2000 Lincoln Road
Pittsburgh, PA 15235
Phone: (412) 361 - 4509
Fax: (412) 361 - 4790

PARKWAY WEST IND. PARK

SCALE: 1/8"=1'
DATE: 2/2/98
APPROVED BY: SAMDOZ INC.
DRAWN BY: RVL
REVISED: 7/27/04

PW-1201

NORTH

