



JENDOCO REAL ESTATE

Parkway West Business Park
1300 Parkway View Drive
11,840 Total Square Feet
4,480 Square Feet of Finished Office



MAIN FEATURES

- Clear Height: 16ft. Above finished floor to underside of structural steel
- Exterior: Insulated wall panel
- Glass wall system at offices

UTILITIES

- Electric: 120/208 volt, three phase four wire
- Natural Gas: Equitable
- Water & Sewage: Robinson Twp.

MISCELLANEOUS

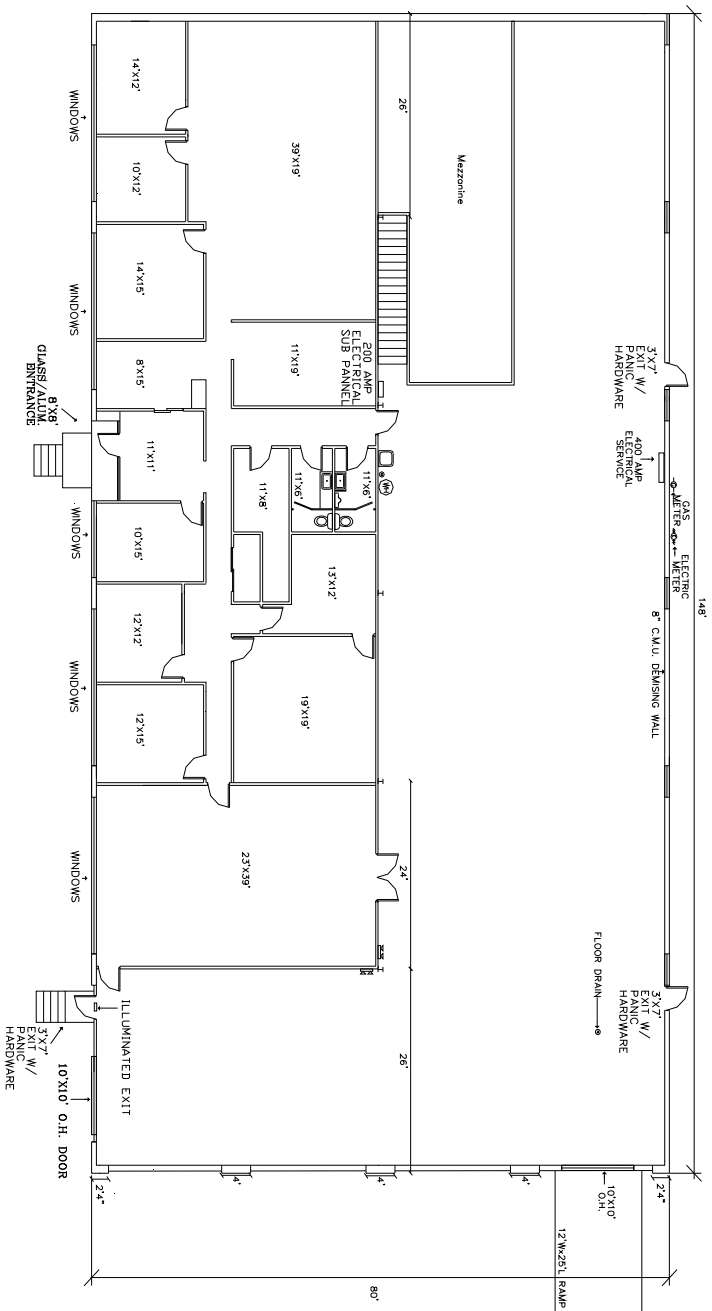
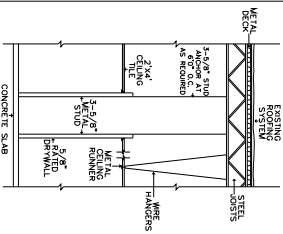
- Ample truck access and maneuvering
- 4 ft. high loading docks
- 24 hour, 7 day a week access

NAIOP
COMMERCIAL REAL ESTATE
DEVELOPMENT ASSOCIATION
PITTSBURGH CHAPTER



Contact Bob Lloyd - T 412-361-4509 F 412-361-4790 - Internet www.jendoco-re.com

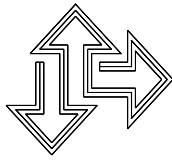
All information furnished regarding properties for rent or sale are subject to errors, omissions, change of price or rental and change or withdraw without notice. Rental terms, all dimensions and specifications are approximate and subject to change without notice.



11,840 SQUARE FEET TOTAL AREA
4,880 SQUARE FEET FINISHED OFFICE

ALL INFORMATION ON THIS DRAWING MUST BE FIELD VERIFIED FOR ACCURACY. OWNER ASSUMES NO LIABILITY FOR INFORMATION UTILIZED FROM THIS DOCUMENT.

- KEY:
- \$ SWITCH
 - ⊕ QUAD OUTLET
 - ⊕ DUPLEX OUTLET
 - ⊕ THERMOSTAT
 - ☼ EMERGENCY LIGHT
 - ☐ ILLUMINATED EXIT



JENDOCO REAL ESTATE
CAD Design Team
2000 Lincoln Road
Pittsburgh, Pa 15235
Phone: (412) 361 - 4509
Fax: (412) 361 - 4790

PARKWAY WEST BUSINESS PARK

SCALE: 1/8"=1'0"
DATE: 5/20/15
APPROVED BY: PARK WEST ASSOC.
DRAWN BY: PB
REVISED

PWBP-13

