



JENDOCO REAL ESTATE

TRY OUR
NEW WEBSITE

jendoco-re.com

Parkway West Business Park
1810 Parkway View Drive
2,365 Total Square Feet
994 Square Feet of Finished Office



MAIN FEATURES

- Clear Height: 16ft. Above finished floor to underside of structural steel
- Exterior: Insulated wall panel
- Glass wall system at offices

UTILITIES

- Electric: 120/208 volt, three phase four wire
- Natural Gas: Equitable
- Water & Sewage: Robinson Twp.

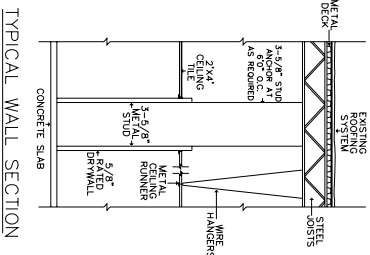
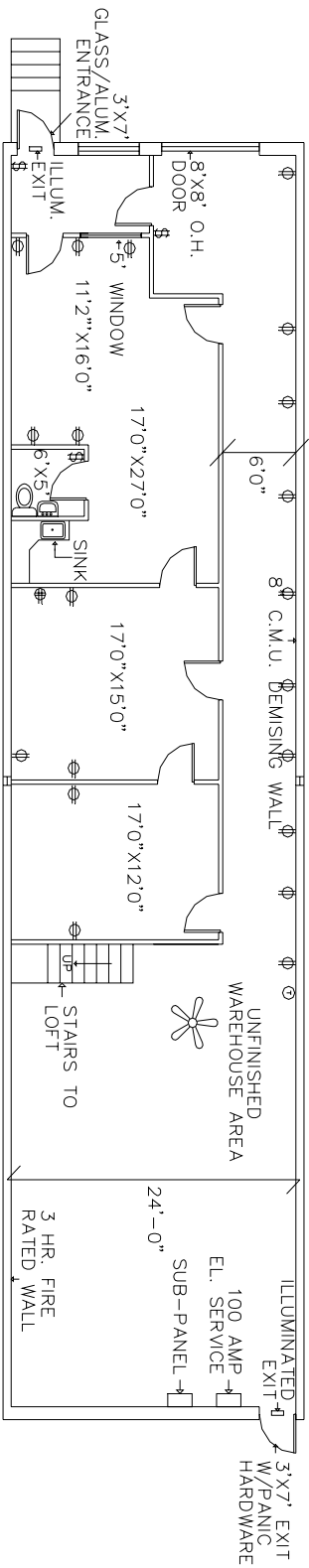
MISCELLANEOUS

- Ample truck access and maneuvering
- 4 ft. high loading docks
- 24 hour, 7 day a week access



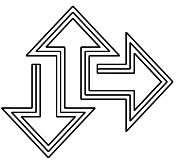
Contact Bob Lloyd - T 412-361-4509 F 412-361-4790 - Internet www.jendoco-re.com

All information furnished regarding properties for rent or sale are subject to errors, omissions, change of price or rental and change or withdraw without notice. Rental terms, all dimensions and specifications are approximate and subject to change without notice.



2365 SQUARE FEET TOTAL AREA
 994 SQUARE FEET FINISHED AS OFFICE

ALL INFORMATION ON THIS DRAWING MUST BE
 FIELD VERIFIED FOR ACCURACY. OWNER ASSUMES
 NO LIABILITY FOR INFORMATION UTILIZED FROM
 THIS DOCUMENT.



JENDOCO REAL ESTATE
CAD Design Team

2000 Lincoln Road
 Pittsburg, PA 15235

Phone: (412) 361 - 4509
 Fax: (412) 361 - 4790

PARKWAY WEST BUS. PARK

SCALE: 1/8" = 1'-0"
 DATE: 11/22/93
 APPROVED BY: SAMDOZ INC.
 DRAWN BY: GS
 REVISED: 7/6/05

AVAILABLE

PW-1810



NORTH