

JENDOCO REAL ESTATE

TRY OUR
NEW WEBVISION

jendoco-re.com

Parkway West Business Park
704 Parkway View Drive
2,365 Total Square Feet
192 Square Feet of Finished Office



MAIN FEATURES

- Clear Height: 16ft. Above finished floor to underside of structural steel
- Exterior: Insulated wall panel
- Glass wall system at offices

UTILITIES

- Electric: 120/208 volt, three phase four wire
- Natural Gas: Equitable
- Water & Sewage: Robinson Twp.

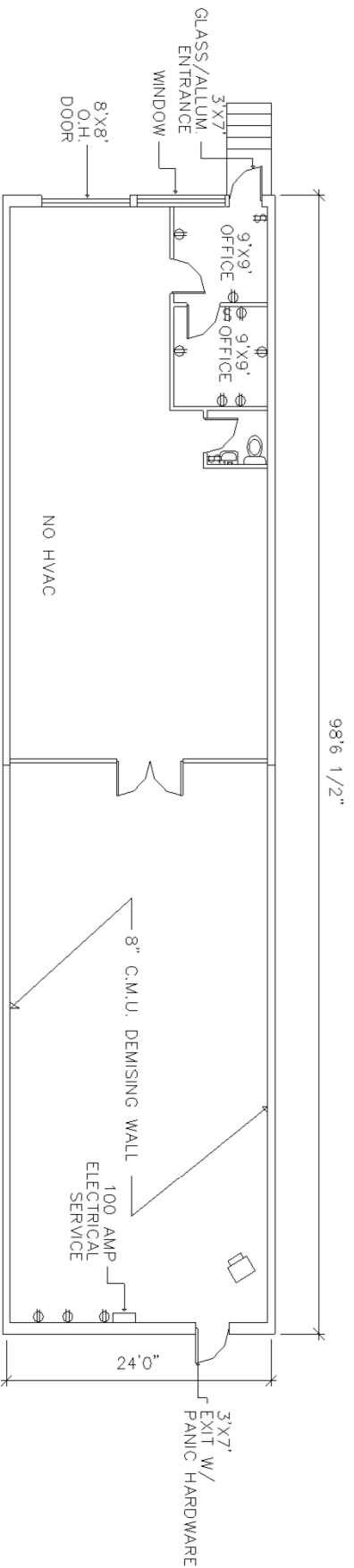
MISCELLANEOUS

- Ample truck access and maneuvering
- 4 ft. high loading docks
- 24 hour, 7 day a week access

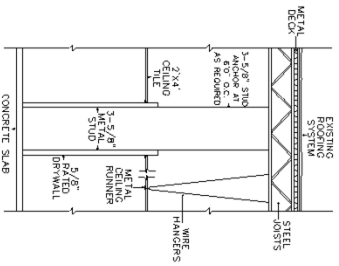


Contact Bob Lloyd - T 412-361-4509 F 412-361-4790 - Internet www.jendoco-re.com

All information furnished regarding properties for rent or sale are subject to errors, omissions, change of price or rental and change or withdraw without notice. Rental terms, all dimensions and specifications are approximate and subject to change without notice.



2,365 SQUARE FEET TOTAL AREA
192 SQUARE FEET FINISHED OFFICE



TYPICAL WALL SECTION

ALL INFORMATION ON THIS DRAWING MUST BE
FIELD VERIFIED FOR ACCURACY. OWNER ASSUMES
NO LIABILITY FOR INFORMATION UTILIZED FROM
THIS DOCUMENT.



2000 Lincoln Road
Pittsburgh, PA 15235

JENDOCO REAL ESTATE
CAD Design Team

Phone: (412) 361 - 4509
Fax: (412) 361 - 4790

PARKWAY WEST BUSINESS PARK

SCALE: 1/8"=1'0" APPROVED BY: PARKWEST ASSOC. DRAWN BY: MRK
DATE: 8-14-92 REVISED

PWBP-704



NORTH