

JENDOCO REAL ESTATE

**TRY OUR
NEW WEBVISION**

jendoco-re.com

Parkway West Business Park

701 Parkway View Drive

2,827 Total Square Feet

305 Square Feet of Finished Office



MAIN FEATURES

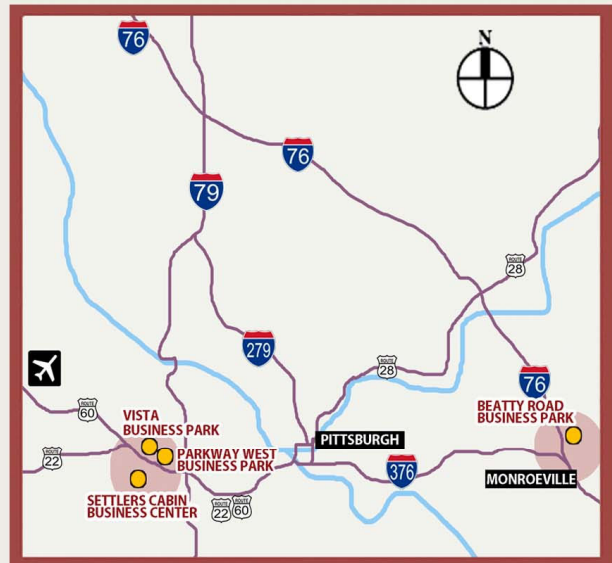
- Clear Height: 16ft. Above finished floor to underside of structural steel
- Exterior: Insulated wall panel
- Glass wall system at offices

UTILITIES

- Electric: 120/208 volt, three phase four wire
- Natural Gas: Equitable
- Water & Sewage: Robinson Twp.

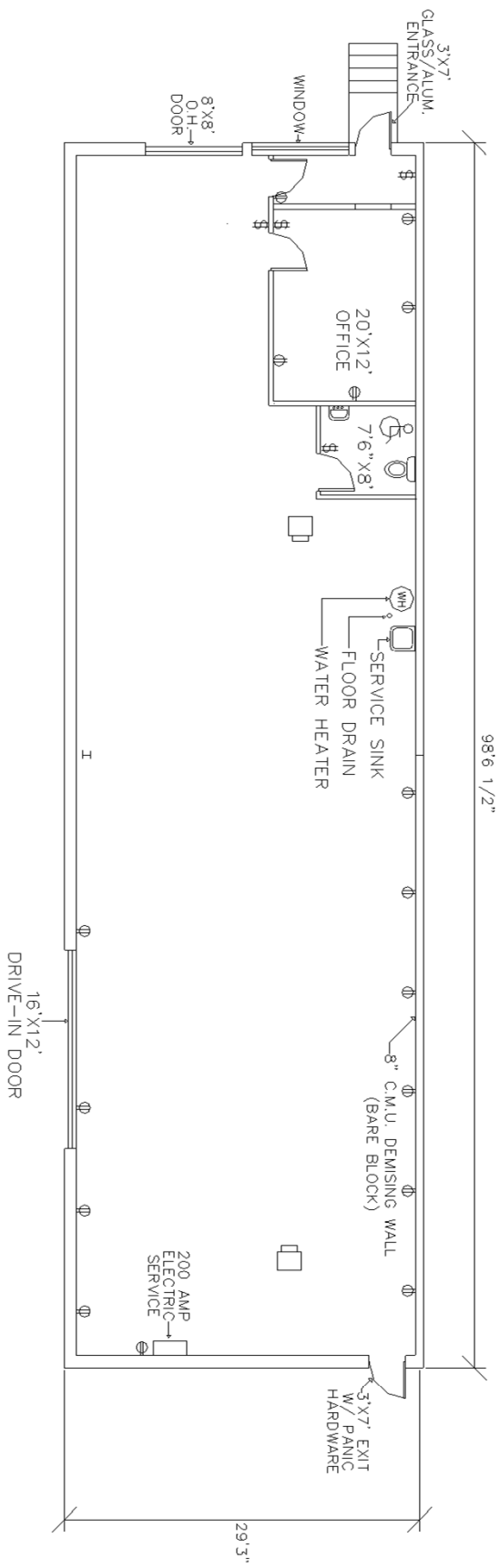
MISCELLANEOUS

- Ample truck access and maneuvering
- 4 ft. high loading docks
- 24 hour, 7 day a week access

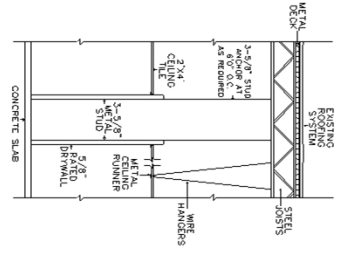


Contact Bob Lloyd - T 412-361-4509 F 412-361-4790 - Internet www.jendoco-re.com

All information furnished regarding properties for rent or sale are subject to errors, omissions, change of price or rental and change or withdraw without notice. Rental terms, all dimensions and specifications are approximate and subject to change without notice.



2827 SQUARE FEET TOTAL AREA
 305 SQUARE FEET FINISHED AS OFFICE AREA



ALL INFORMATION ON THIS DRAWING MUST BE
 FIELD VERIFIED FOR ACCURACY. OWNER ASSUMES
 NO LIABILITY FOR INFORMATION UTILIZED FROM
 THIS DOCUMENT.

JENDOCO REAL ESTATE

CAD Design Team

2000 Lincoln Road
 Pittsburgh, PA 15235

Phone: (412) 361 - 4509
 Fax: (412) 361 - 4790



PARKWAY WEST BUSINESS PARK

SCALE: 1/8"=1'0"
 DATE: 2/7/19
 APPROVED BY: SAMDOZ INC.
 DRAWN BY: PB
 REVISED

PW-701

- KEY:
- \$ SWITCH
 - ⊕ QUAD OUTLET
 - ⊕ DUPLEX OUTLET
 - ⊙ THERMOSTAT
 - ☒ EMERGENCY LIGHT
 - ☒ ILLUMINATED EXIT



NORTH