



JENDOCO REAL ESTATE

TRY OUR
NEW WEBVISION

jendoco-re.com

Vista Business Park

910 Vista Park Drive

2,628 Total Square Feet

1,042 Square Feet of Finished Office



MAIN FEATURES

- Clear Height: 17ft. Above finished floor to underside of structural steel
- Exterior: Insulated wall panel
- Glass wall system at offices

UTILITIES

- Electric: 120/208 volt, three phase four wire
- Natural Gas: Equitable
- Water & Sewage: Robinson Twp.

MISCELLANEOUS

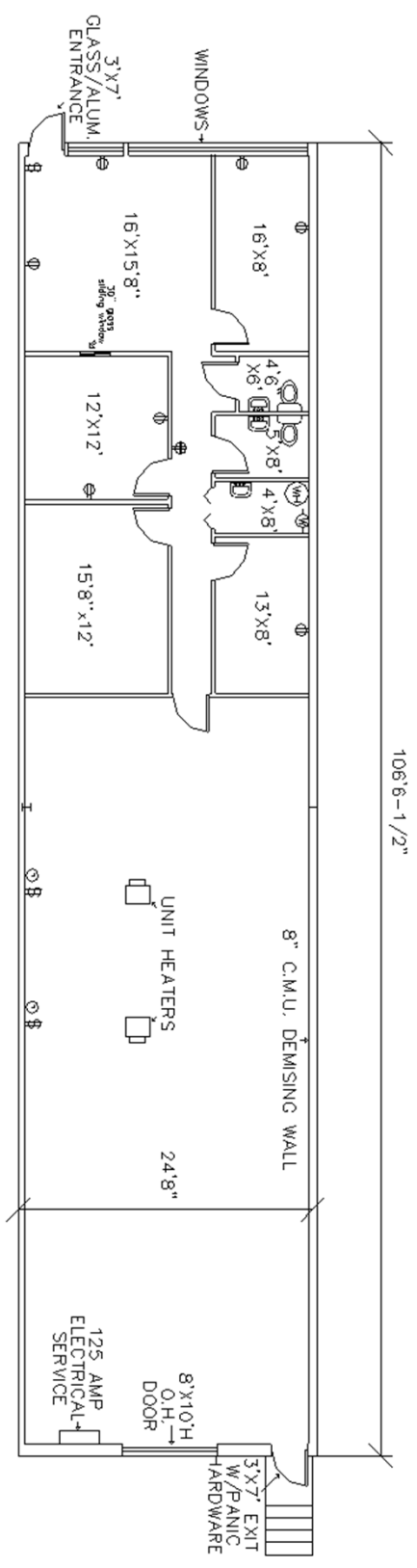
- Ample truck access and maneuvering
- 4 ft. high loading docks
- 24 hour, 7 day a week access

NAIOP
COMMERCIAL REAL ESTATE
DEVELOPMENT ASSOCIATION
PITTSBURGH CHAPTER

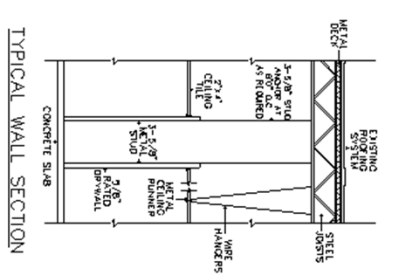


Contact Bob Lloyd - T 412-361-4509 F 412-361-4790 - Internet www.jendoco-re.com

All information furnished regarding properties for rent or sale are subject to errors, omissions, change of price or rental and change or withdraw without notice. Rental terms, all dimensions and specifications are approximate and subject to change without notice.



2,628 SQUARE FEET TOTAL AREA
 1,042 SQUARE FEET FINISHED AS OFFICE



ALL INFORMATION ON THIS DRAWING MUST BE
 FIELD VERIFIED FOR ACCURACY. OWNER ASSUMES
 NO LIABILITY FOR INFORMATION UTILIZED FROM
 THIS DOCUMENT.



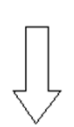
JENDOCO REAL ESTATE
CAD Design Team

2000 Lincoln Road
 Pittsburgh, PA 15235

Phone: (412) 361 - 4509
 Fax: (412) 361 - 4790

VISTA BUSINESS PARK

SCALE: 1/8"=1'	APPROVED BY:	DRAWN BY: PB
DATE: 07/22/08	VISTA PARK ASSOC.	REVISED
VIP-910		



NORTH