

JENDOCO REAL ESTATE

TRY OUR
NEW WEBVISION

jendoco-re.com

Parkway West Business Park
703 Parkway View Drive
2,365 Total Square Feet
275 Square Feet of Finished Office



MAIN FEATURES

- Clear Height: 16ft. Above finished floor to underside of structural steel
- Exterior: Insulated wall panel
- Glass wall system at offices

UTILITIES

- Electric: 120/208 volt, three phase four wire
- Natural Gas: Equitable
- Water & Sewage: Robinson Twp.

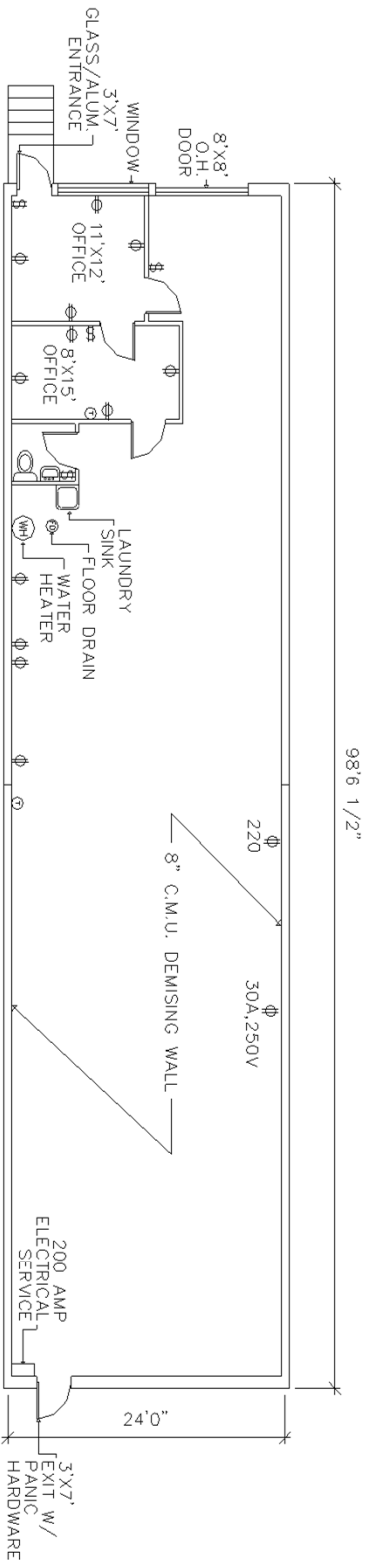
MISCELLANEOUS

- Ample truck access and maneuvering
- 4 ft. high loading docks
- 24 hour, 7 day a week access

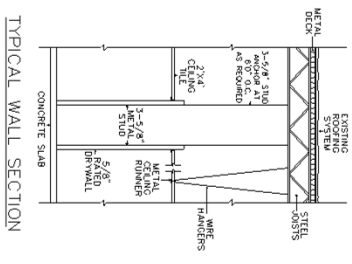


Contact Bob Lloyd - T 412-361-4509 F 412-361-4790 - Internet www.jendoco-re.com

All information furnished regarding properties for rent or sale are subject to errors, omissions, change of price or rental and change or withdraw without notice. Rental terms, all dimensions and specifications are approximate and subject to change without notice.



2,365 SQUARE FEET TOTAL AREA
 275 SQUARE FEET FINISHED OFFICE



ALL INFORMATION ON THIS DRAWING MUST BE
 FIELD VERIFIED FOR ACCURACY. OWNER ASSUMES
 NO LIABILITY FOR INFORMATION UTILIZED FROM
 THIS DOCUMENT.

KEY	
\$ -	SWITCH
Φ -	DUPLEX OUTLET
⊖ -	THERMOSTAT



JENDOCO REAL ESTATE

CAD Design Team

2000 Lincoln Road
 Pittsburgh, PA 15235

Phone: (412) 361 - 4509
 Fax: (412) 361 - 4790

PARKWAY WEST BUSINESS, PARK	
SCALE: 1/8"=1'0"	APPROVED BY: PARKWEST ASSOC.
DATE: 8-14-92	DRAWN BY: CJK
AVAILABLE	
PWBP-703	
REVISED 1-7-01	

NORTH

