



# JENDOCO REAL ESTATE

**TRY OUR  
NEW WEBSITE**

[jendoco-re.com](http://jendoco-re.com)

## Beatty Road Business Park 616-A Beatty Road

**5,905 Total Square Feet**  
**3,289 Square Feet of Finished Office**



### MAIN FEATURES

- Clear Height: 17ft. Above finished floor to underside of structural steel
- Exterior: Insulated wall panel
- Glass wall system at offices

### UTILITIES

- Electric: 120/208 volt, three phase four wire
- Natural Gas: Columbia Gas
- Water & Sewage: Monroeville.

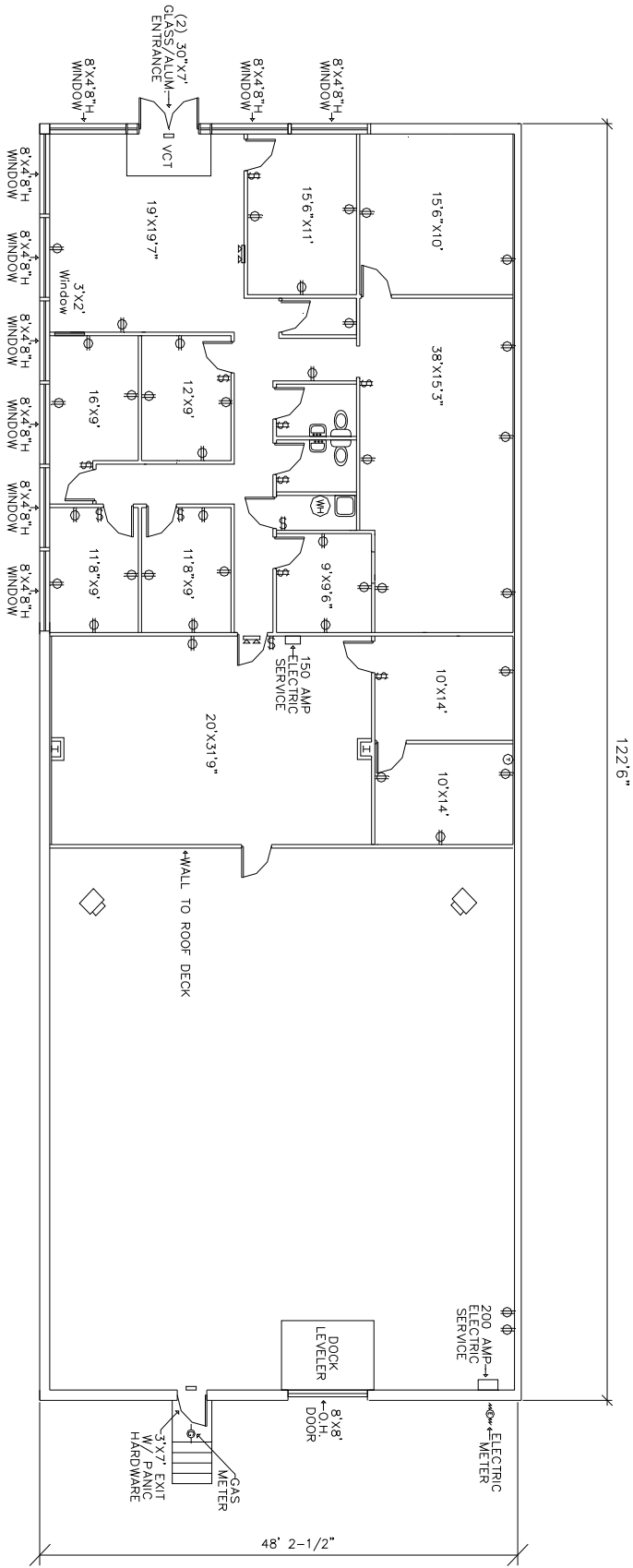
### MISCELLANEOUS

- Ample truck access and maneuvering
- 4 ft. high loading docks and overhead door at grade
- 24 hour, 7 day a week access



Contact Bob Lloyd - T 412-361-4509 F 412-361-4790 - Internet [www.jendoco-re.com](http://www.jendoco-re.com)

All information furnished regarding properties for rent or sale are subject to errors, omissions, change of price or rental and change or withdraw without notice. Rental terms, all dimensions and specifications are approximate and subject to change without notice.



5905 SQUARE FEET TOTAL AREA  
3289 SQUARE FEET FINISHED OFFICE

TYPICAL WALL SECTION  
N.T.S.

ALL INFORMATION ON THIS DRAWING MUST BE  
FIELD VERIFIED FOR ACCURACY. OWNER ASSUMES  
NO LIABILITY FOR INFORMATION UTILIZED FROM  
THIS DOCUMENT.

- KEY:
- \$ SWITCH
  - ⊕ QUAD OUTLET
  - ⊕ DUPLEX OUTLET
  - ⊙ THERMOSTAT
  - ⚡ EMERGENCY LIGHT
  - ☐ ILLUMINATED EXIT

# JENDOCO REAL ESTATE

CAD Design Team

2000 Lincoln Road  
Pittsburgh, PA 15235

Phone: (412) 361 - 4509  
Fax: (412) 361 - 4790

## BEATTY ROAD BUSINESS PARK

SCALE: 1/8"=1'  
DATE: 12/01/09  
APPROVED BY: PARKWEST ASSOC.  
DRAWN BY: PB  
REVISED

BR-616-A



NORTH