

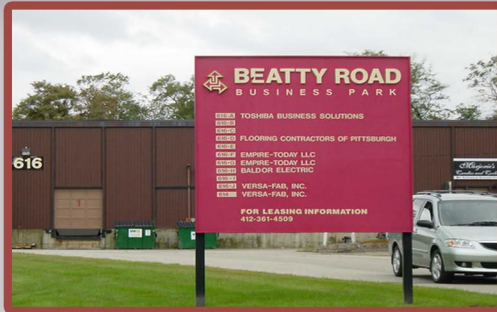
# JENDOCO REAL ESTATE

TRY OUR  
NEW WEBVISION

[jendoco-re.com](http://jendoco-re.com)

## Beatty Road Business Park 616-B Beatty Road

**4,043 Total Square Feet**  
**2,525 Square Feet of Finished Office**



### MAIN FEATURES

- Clear Height: 17ft. Above finished floor to underside of structural steel
- Exterior: Insulated wall panel
- Glass wall system at offices

### UTILITIES

- Electric: 120/208 volt, three phase four wire
- Natural Gas: Columbia Gas
- Water & Sewage: Monroeville.

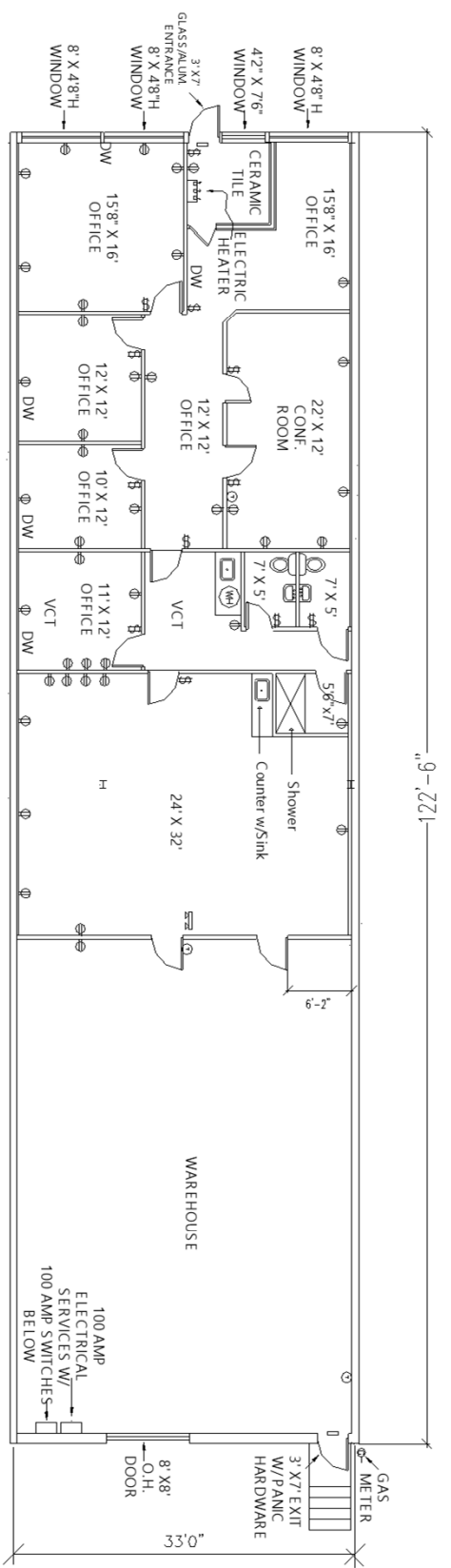
### MISCELLANEOUS

- Ample truck access and maneuvering
- 4 ft. high loading docks and overhead door at grade
- 24 hour, 7 day a week access

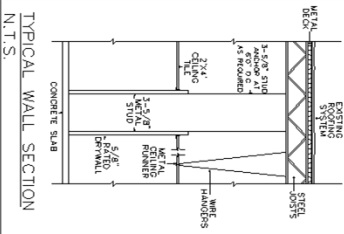


Contact Bob Lloyd - T 412-361-4509 F 412-361-4790 - Internet [www.jendoco-re.com](http://www.jendoco-re.com)

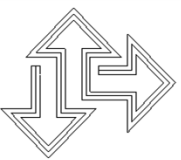
All information furnished regarding properties for rent or sale are subject to errors, omissions, change of price or rental and change or withdraw without notice. Rental terms, all dimensions and specifications are approximate and subject to change without notice.



4043 SQUARE FEET TOTAL AREA  
 2525 SQUARE FEET FINISHED OFFICE



ALL INFORMATION ON THIS DRAWING MUST BE  
 FIELD VERIFIED FOR ACCURACY. OWNER ASSUMES  
 NO LIABILITY FOR INFORMATION UTILIZED FROM  
 THIS DOCUMENT.



**JENDOCO REAL ESTATE**  
 CAD Design Team

2000 Lincoln Road  
 Pittsburgh, PA 15235

Phone: (412) 361 - 4509  
 Fax: (412) 361 - 4790

**BEATTY ROAD BUSINESS PARK**  
 APPROVED BY: PARKWEST ASSOC.  
 DRAWN BY: PB  
 REVISED  
 BR-616-B

SCALE: 1/8"=1'  
 DATE: 3/19/20

- KEY:
- ⊕ SWITCH
  - ⊕ QUAD OUTLET
  - ⊕ DUPLEX OUTLET
  - ⊕ THERMOSTAT
  - ⊕ EMERGENCY LIGHT
  - ⊕ ILLUMINATED EXIT



NORTH