

JENDOCO REAL ESTATE

TRY OUR
NEW WEBVISION

jendoco-re.com

Parkway West Business Park
611 Parkway View Drive

8,820 Total Square Feet
1,058 Square Feet of Finished Office



MAIN FEATURES

- Clear Height: 16ft. Above finished floor to underside of structural steel
- Exterior: Insulated wall panel
- Glass wall system at offices

UTILITIES

- Electric: 120/208 volt, three phase four Wire
- Natural Gas: Equitable
- Water & Sewage: Robinson Twp.

MISCELLANEOUS

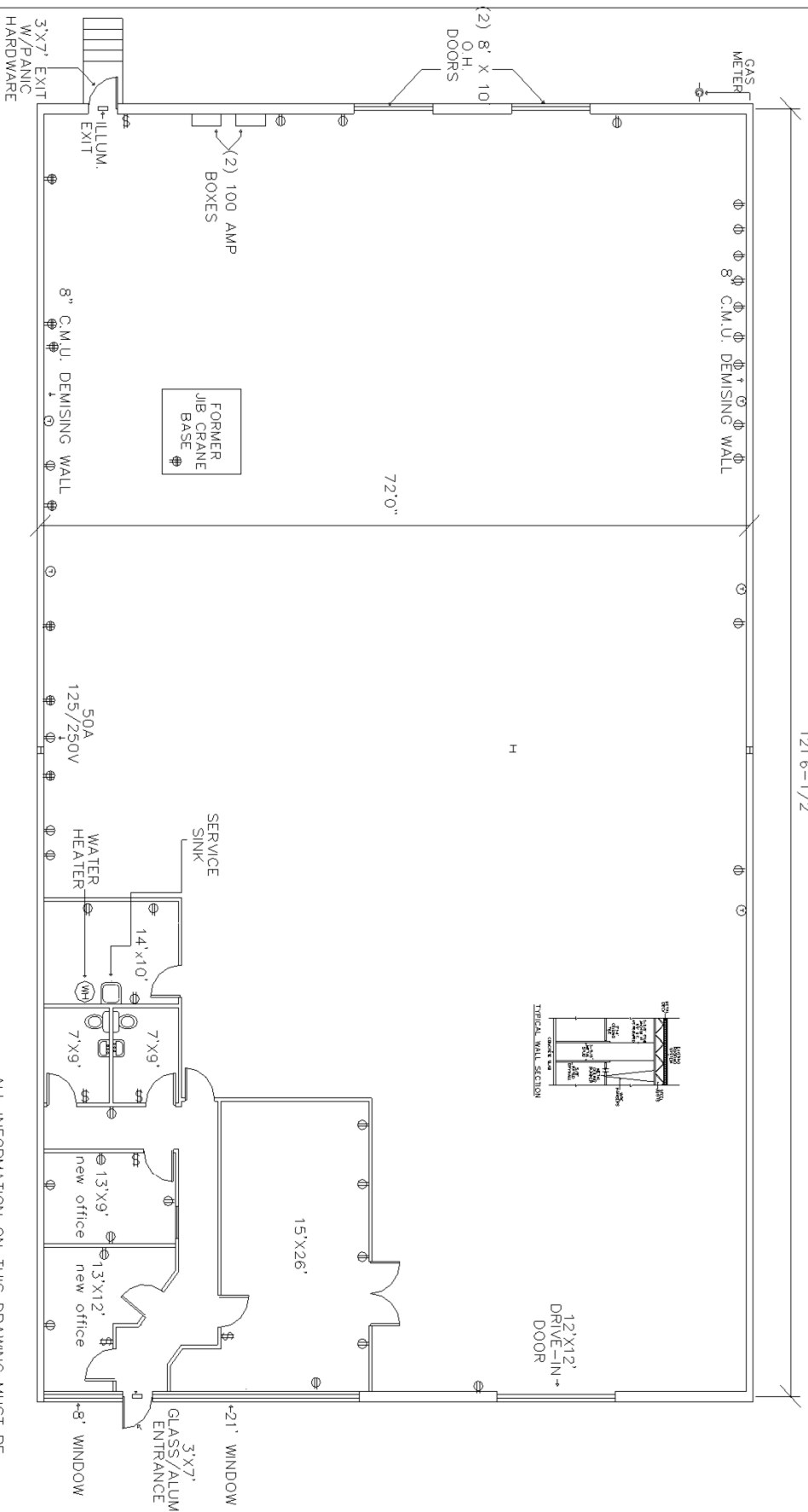
- Ample truck access and maneuvering
- 4 ft. high loading docks
- 24 hour, 7 day a week access



Contact Bob Lloyd - T 412-361-4509 F 412-361-4790 - Internet www.jendoco-re.com

All information furnished regarding properties for rent or sale are subject to errors, omissions, change of price or rental and change or withdraw without notice. Rental terms, all dimensions and specifications are approximate and subject to change without notice.

121'-6-1/2"



ALL INFORMATION ON THIS DRAWING MUST BE
 FIELD VERIFIED FOR ACCURACY. OWNER ASSUMES
 NO LIABILITY FOR INFORMATION UTILIZED FROM
 THIS DOCUMENT.

8820 SQUARE FEET TOTAL AREA
 1,058 SQUARE FEET FINISHED AS OFFICE AREA



JENDOCO REAL ESTATE
CAD Design Team
 2000 Lincoln Road
 Pittsburgh, PA 15235
 Phone: (412) 361 - 4509
 Fax: (412) 361 - 4790

PARKWAY WEST BUS. PARK

SCALE: 1/8"=1'	APPROVED BY: SAMDOZ INC.	DRAWN BY: PB
DATE: 10/6/19	REVISID	
PW-611		

NORTH