

JENDOCO REAL ESTATE

**TRY OUR
NEW WEBVISION**

jendoco-re.com

Parkway West Business Park

602-603 Parkway View Drive

8,774 Total Square Feet

3,332 Square Feet of Finished Office



MAIN FEATURES

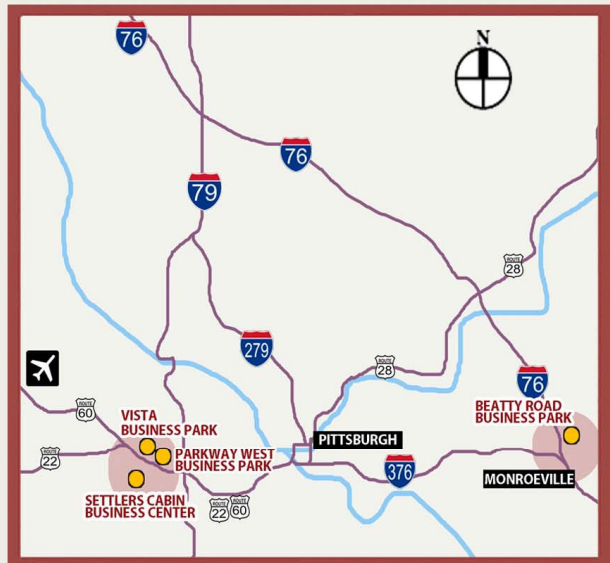
- Clear Height: 16ft. Above finished floor to underside of structural steel
- Exterior: Insulated wall panel
- Glass wall system at offices

UTILITIES

- Electric: 120/208 volt, three phase four wire
- Natural Gas: Equitable
- Water & Sewage: Robinson Twp.

MISCELLANEOUS

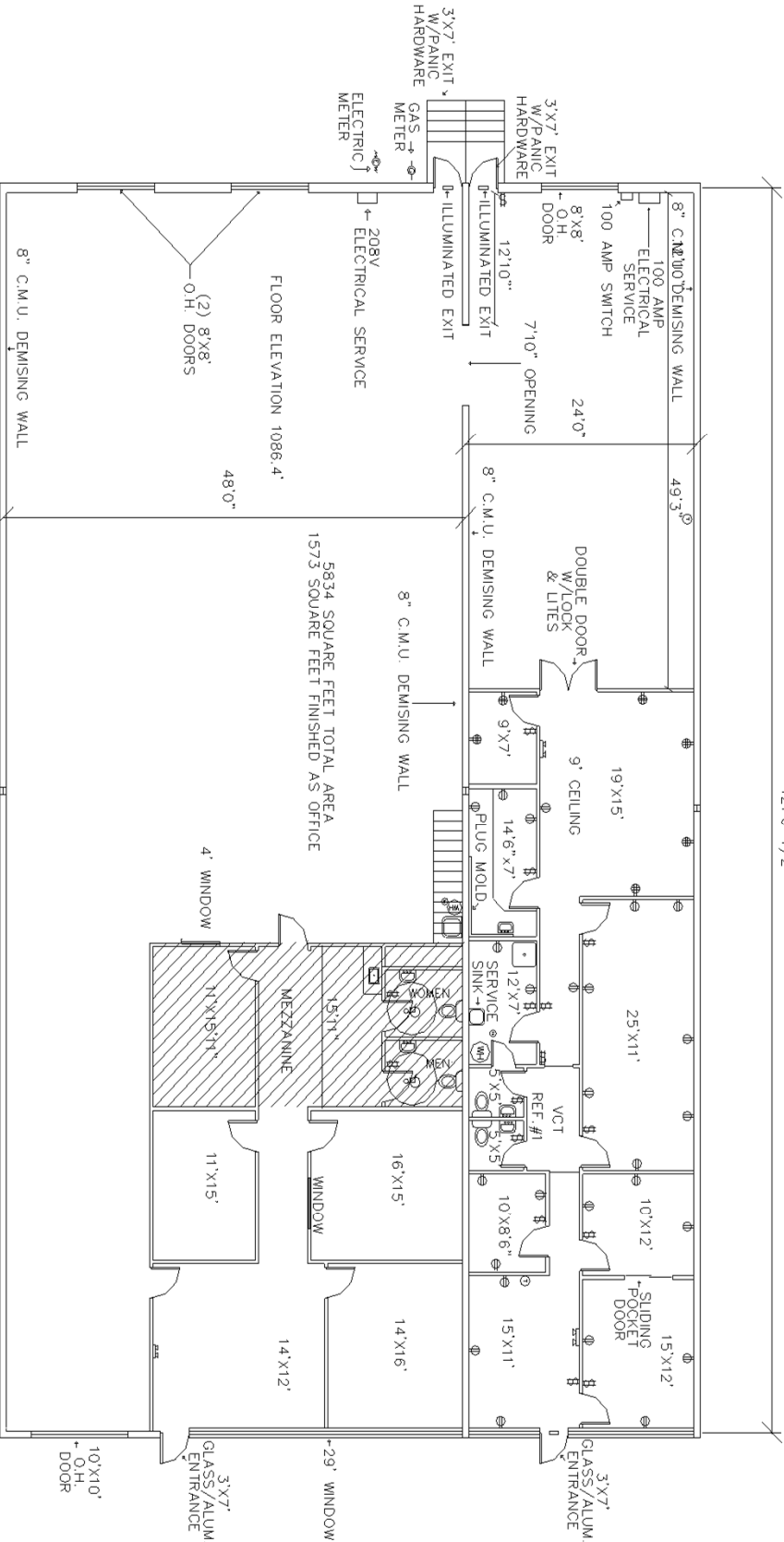
- Ample truck access and maneuvering
- 4 ft. high loading docks
- 24 hour, 7 day a week access



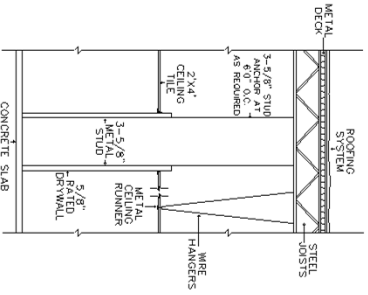
Contact Bob Lloyd - T 412-361-4509 F 412-361-4790 - Internet www.jendoco-re.com

All information furnished regarding properties for rent or sale are subject to errors, omissions, change of price or rental and change or withdraw without notice. Rental terms, all dimensions and specifications are approximate and subject to change without notice.

121'-6-1/2"



TYPICAL WALL SECTION



ALL INFORMATION ON THIS DRAWING MUST BE FIELD VERIFIED FOR ACCURACY. OWNER ASSUMES NO LIABILITY FOR INFORMATION UTILIZED FROM THIS DOCUMENT.

8774 SQUARE FEET TOTAL AREA
3,332 SQUARE FEET FINISHED AS OFFICE

5834 SQUARE FEET TOTAL AREA
1573 SQUARE FEET FINISHED AS OFFICE

MEZZANINE

JENDOCO REAL ESTATE

CAD Design Team

2000 Lincoln Road
Pittsburgh, PA 15235

Phone: (412) 361 - 4509
Fax: (412) 361 - 4790

PARKWAY WEST BUS. PARK

SCALE: 1/8"=1'	APPROVED BY: SAMDOZ INC.	DRAWN BY: PB
DATE: 05/9/22	PW-602-603	REVISED

PW-602-603

NORTH