

# JENDOCO REAL ESTATE

## Parkway West Business Park

**1205 Parkway View Drive**

**2,360 Total Square Feet**

**1,358 Square Feet of Finished Office**



### MAIN FEATURES

- Clear Height: 16ft. Above finished floor to underside of structural steel
- Exterior: Insulated wall panel
- Glass wall system at offices

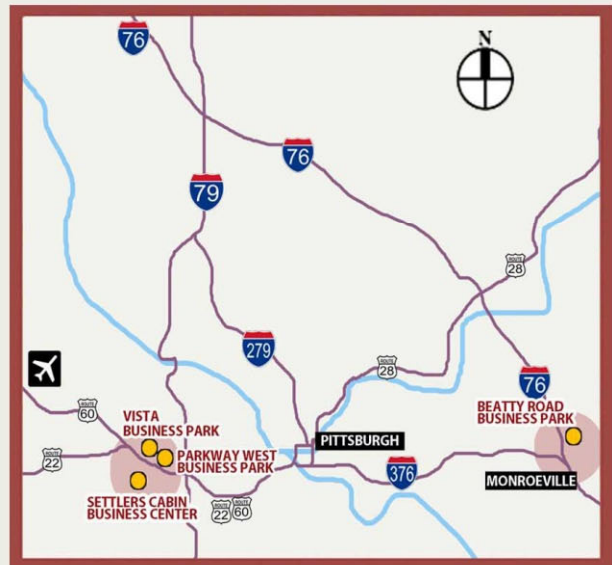
### UTILITIES

- Electric: 120/208 volt, three phase four wire
- Natural Gas: Equitable
- Water & Sewage: Robinson Twp.

### MISCELLANEOUS

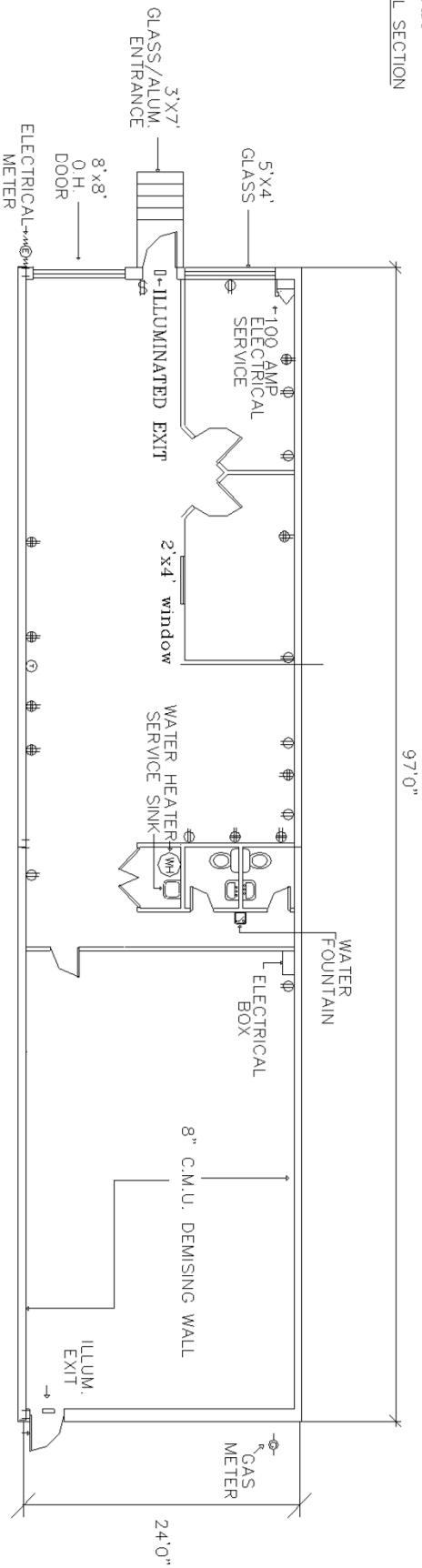
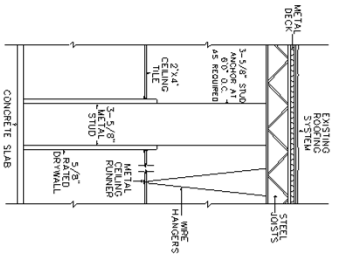
- Ample truck access and maneuvering
- 4 ft. high loading docks
- 24 hour, 7 day a week access

**NAIOP**  
COMMERCIAL REAL ESTATE  
DEVELOPMENT ASSOCIATION  
PITTSBURGH CHAPTER



Contact Pierre Brun - Meredith Calfe - T 412-361-4509 F 412-361-4790 - Internet [www.jendoco-re.com](http://www.jendoco-re.com)

All information furnished regarding properties for rent or sale are subject to errors, omissions, change of price or rental and change or withdraw without notice. Rental terms, all dimensions and specifications are approximate and subject to change without notice.



2,960 SQUARE FEET TOTAL AREA  
 1,358 SQUARE FEET FINISHED AS OFFICE

ALL INFORMATION ON THIS DRAWING MUST BE  
 FIELD VERIFIED FOR ACCURACY. OWNER ASSUMES  
 NO LIABILITY FOR INFORMATION UTILIZED FROM  
 THIS DOCUMENT.

# JENDOCO REAL ESTATE

*CAD Design Team*

2000 Lincoln Road  
 Pittsburgh, PA 15235

Phone: (412) 361 - 4509  
 Fax: (412) 361 - 4790

## PARKWAY WEST BUSINESS PARK

SCALE: NTS  
 DATE: 12/14/21  
 APPROVED BY: SAMDOZ INC.  
 DRAWN BY: pb  
 REVISED: 8/1/23

PWBP-1205

NORTH

