

JENDOCO REAL ESTATE

Vista Business Park

925 Vista Park Drive

10,148 Total Square Feet

2,066 Square Feet of Finished Office



MAIN FEATURES

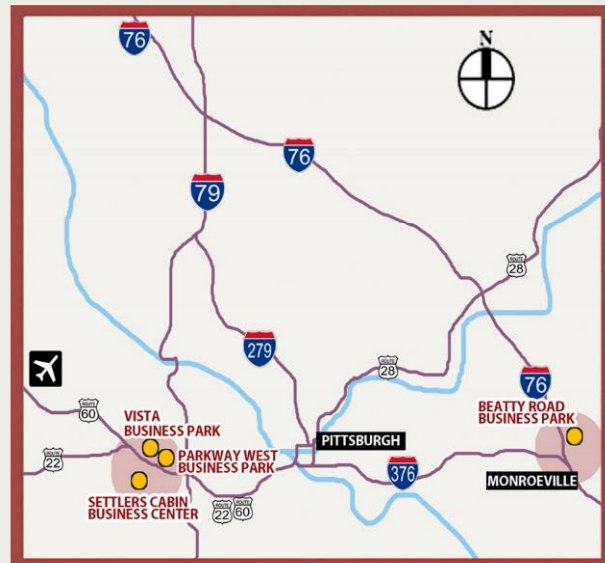
- Clear Height: 17ft. Above finished floor to underside of structural steel
- Exterior: Insulated wall panel
- Glass wall system at offices

UTILITIES

- Electric: 120/208 volt, three phase four wire
- Natural Gas: Equitable
- Water & Sewage: Robinson Twp.

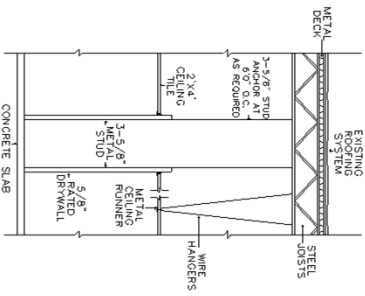
MISCELLANEOUS

- Ample truck access and maneuvering
- 4 ft. high loading docks
- 24 hour, 7 day a week access

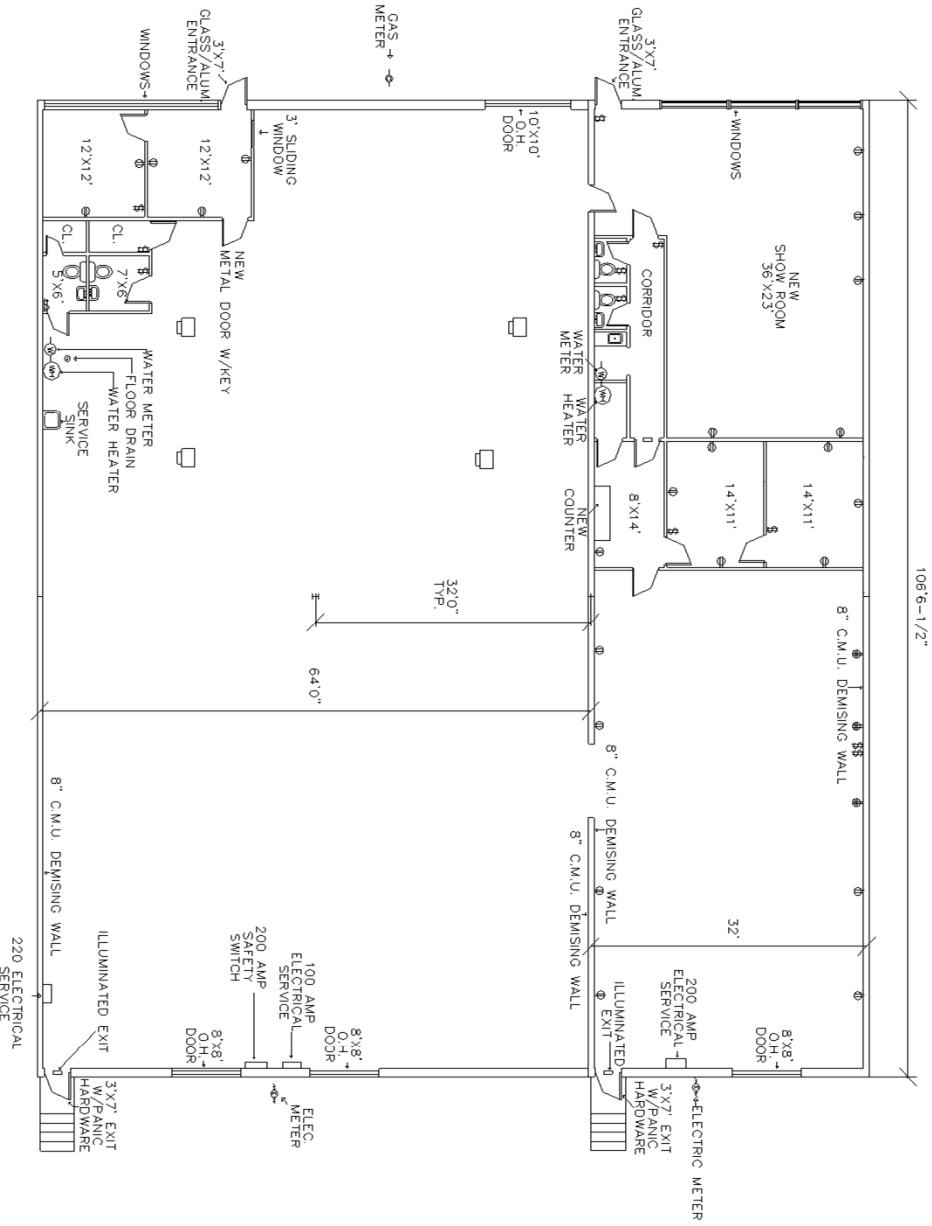


Contact Bob Lloyd - T 412-361-4509 F 412-361-4790 - Internet www.jendoco-re.com

All information furnished regarding properties for rent or sale are subject to errors, omissions, change of price or rental and change or withdraw without notice. Rental terms, all dimensions and specifications are approximate and subject to change without notice.



TYPICAL WALL SECTION



10,148 SQUARE FEET TOTAL AREA
2,066 SQUARE FEET FINISHED AS OFFICE

ALL INFORMATION ON THIS DRAWING MUST BE
FIELD VERIFIED FOR ACCURACY. OWNER ASSUMES
NO LIABILITY FOR INFORMATION UTILIZED FROM
THIS DOCUMENT.

JENDOCO REAL ESTATE

CAD Design Team

2000 Lincoln Road
Pittsburgh, PA 15235

Phone: (412) 361 - 4509
Fax: (412) 361 - 4790

VISTA BUSINESS PARK

SCALE: 1/8"=1'
DATE: 2/9/23

APPROVED BY: VISTA PARK ASSOC.
DRAWN BY: PB
REVISED

WP-920&925



NORTH

