



JENDOCO REAL ESTATE

Parkway West Business Park
705 Parkway View Drive
2,365 Total Square Feet
265 Square Feet of Finished Office



MAIN FEATURES

- Clear Height: 16ft. Above finished floor to underside of structural steel
- Exterior: Insulated wall panel
- Glass wall system at offices

UTILITIES

- Electric: 120/208 volt, three phase four wire
- Natural Gas: Equitable
- Water & Sewage: Robinson Twp.

MISCELLANEOUS

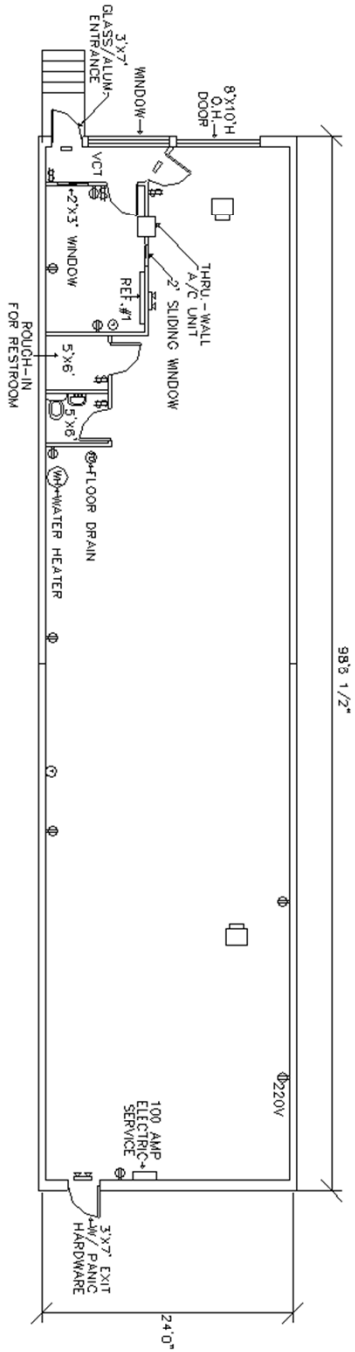
- Ample truck access and maneuvering
- 4 ft. high loading docks
- 24 hour, 7 day a week access

NAIOP
COMMERCIAL REAL ESTATE
DEVELOPMENT ASSOCIATION
PITTSBURGH CHAPTER

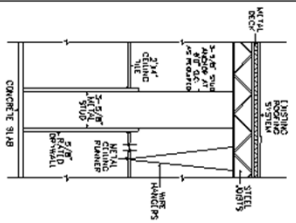


Contact Bob Lloyd - T 412-361-4509 F 412-361-4790 - Internet www.jendoco-re.com

All information furnished regarding properties for rent or sale are subject to errors, omissions, change of price or rental and change or withdraw without notice. Rental terms, all dimensions and specifications are approximate and subject to change without notice.



REFERENCES:
 1. DENON'S BASEBOARD HEATER 285 SQUARE FEET FINISHED AS OFFICE



TYPICAL WALL SECTION
 N.T.S.

ALL INFORMATION ON THIS DRAWING MUST BE
 FIELD VERIFIED FOR ACCURACY. OWNER ASSUMES
 NO LIABILITY FOR INFORMATION UTILIZED FROM
 THIS DOCUMENT.

- KEY:
- ⊞ SWITCH
 - ⊞ QUAD OUTLET
 - ⊞ DUPLEX OUTLET
 - ⊞ THERMOSTAT
 - ⊞ EMERGENCY LIGHT
 - ⊞ ILLUMINATED EXIT

JENDOCO REAL ESTATE
CAD Design Team

2000 Lincoln Road
 Pittsburgh, PA 15235

Phone: (412) 361 - 4509
 Fax: (412) 361 - 4790

PARKWAY WEST BUSINESS PARK	
SCALE: 1/8"=1'0"	APPROVED BY: DET
DATE: 8/14/92	PARKWEST ASSOC.
PW - 705	
AVAILABLE	

NORTH